

24.7blinds

# TWIST & FIT ROLLER BLIND

## FITTING GUIDE

 Fitting Time: Approx. 30 Sec

 **WARNING:** PLEASE READ THE INSTRUCTIONS BEFORE OPERATING THIS PRODUCT



Specifically designed for recessed windows, this method eliminates the need for drilling or screws unlike traditional roller blind installations.

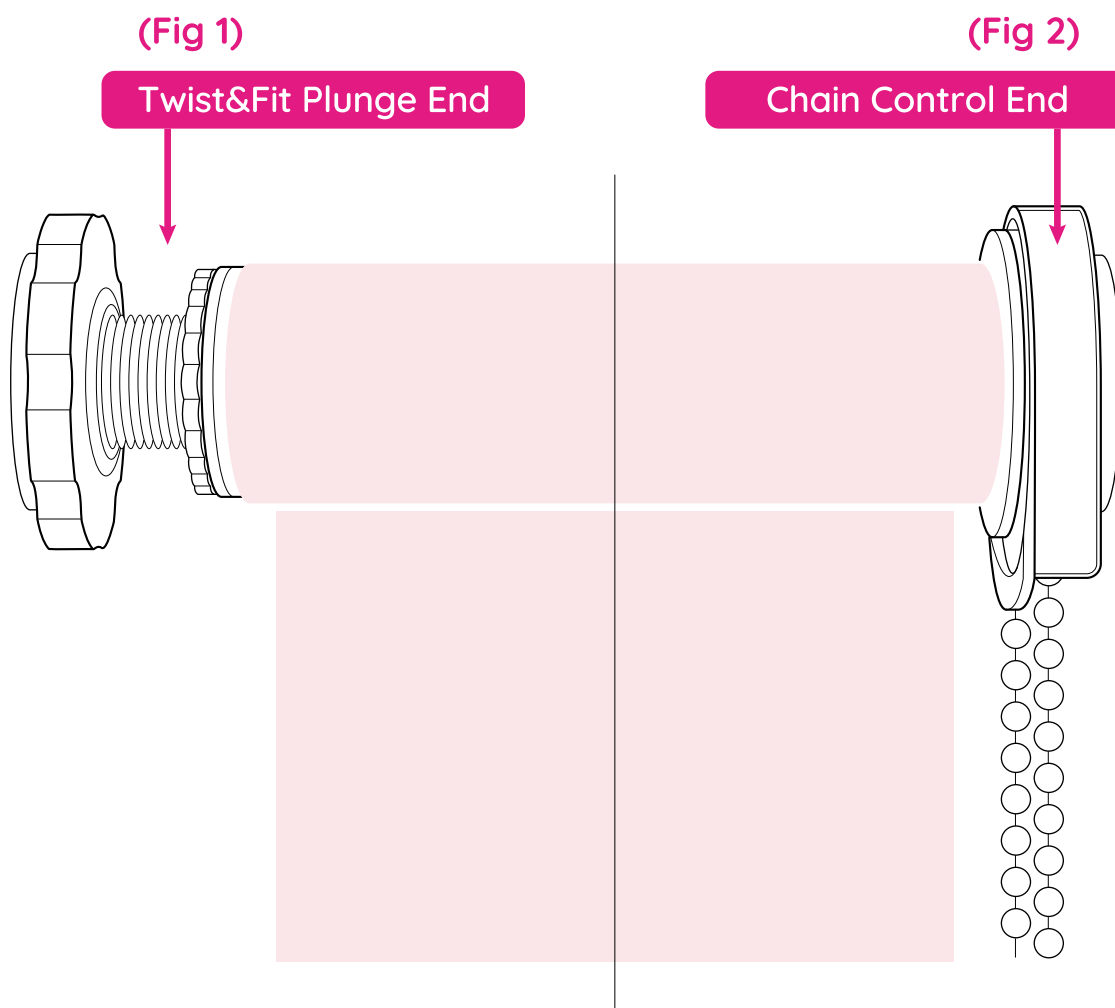
Adjust your Twist&Fit blind to any position within your recess, ideal for easy access to a top-opening window. The movable twist fitting ensures a secure installation on solid, flat walls.

## STEP 1 - INSTALLING THE BLIND

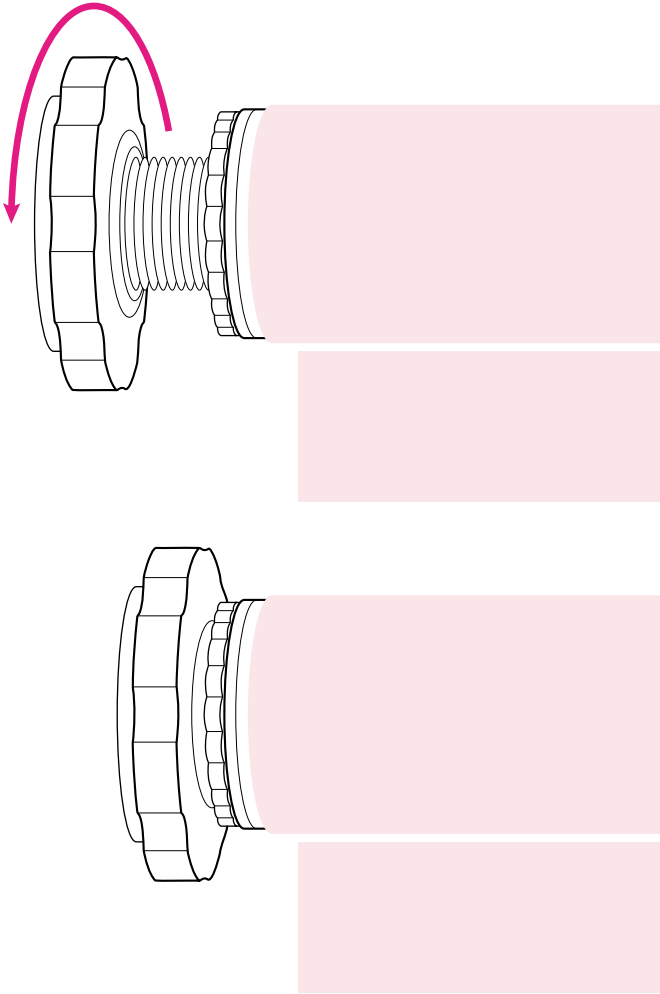
Unpack your blind on a clean, dry surface.

**NOTE:** The Twist&Fit plunge end is positioned on the opposite side of the chain control. The twist cog should be closer to the wall side to enable the plunge mechanism before tightening.

Guide the twist end (Fig 1) into your window recess, pressing down on the plunge, then proceed to insert the opposite side of your blind (Fig 2).



THE INSTALLATION OF THIS PRODUCT SHOULD BE  
CONDUCTED BY SOMEONE COMPETENT IN DIY.



Maintain your grip on the blind and make adjustments to achieve a level position.

**NOTE:** To minimise excess light bleed, we advise pushing the roller as deep into the recess as possible.

Gently rotate the largest cog on the twist end so it starts to move towards the blind fabric. For a right-hand chain control, twist the cog backwards. For a left-hand control, turn it in the opposite direction.

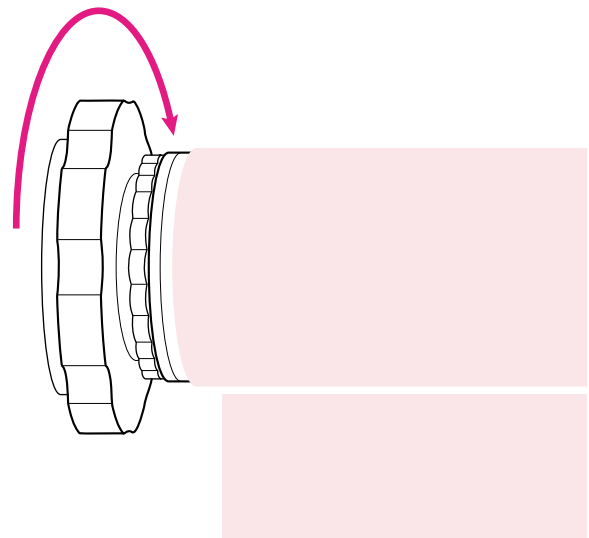
Your blind is now secure.

Enhance the stability and longevity of your blind by using a spirit level to ensure a perfect fit. This will enable a secure attachment, contributing to the overall durability and aesthetics of the blind.

## STEP 2 - RELEASING THE BLIND

To release the blind, grip it firmly and twist the cog towards the wall and gently slide the blind out.

**NOTE:** If your window is exposed to high humidity or direct sunlight, occasional adjustments to the twist tension may be necessary throughout the year.



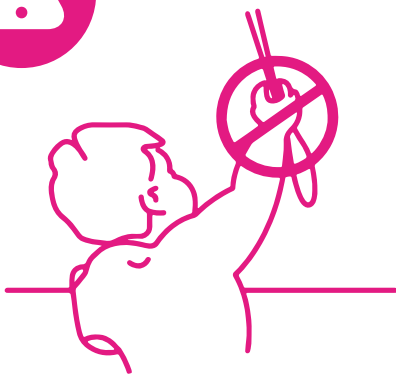
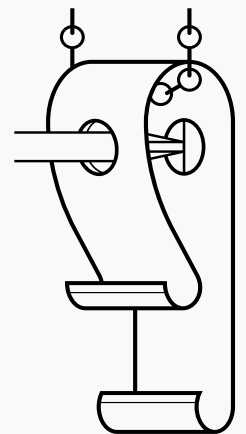
# CHILD SAFETY

The safety device must be installed at the maximum distance possible from the control mechanism, and at least 1.5 metres from the floor to prevent looped chain becoming slack.

## STEP 3 - INSTALLING THE SAFETY DEVICE

Place the safety device on the wall and mark the positioning of the 2 screw holes. Drill holes using a suitable drill bit. Place device into position ensuring the chain is fully taut. Screw the safety device securely to the wall using suitable fixings.

**CHILDREN CAN STRANGLE IF A SAFETY DEVICE IS NOT INSTALLED. ALWAYS USE A SAFETY DEVICE TO KEEP CORDS AND CHAINS OUT OF REACH OF CHILDREN.**



## WARNING

Young children can be strangled by loops in pull cords, chains, tapes and inner cords that operate the product.

To avoid strangulation and entanglement, keep cords out of the reach of young children.

Cords may become wrapped around a child's neck. Move beds, cots and furniture away from window covering cords.

Do not tie cords together. Make sure cords do not twist and create a loop.