

247blinds

CLIP&FIT BLIND

FITTING GUIDE

🕒 Fitting Time: Approx. 5 Min

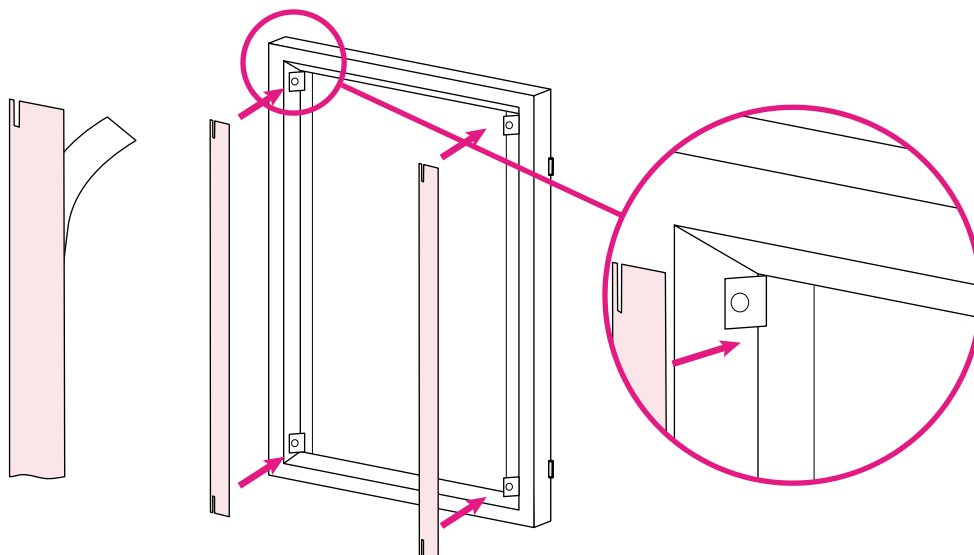
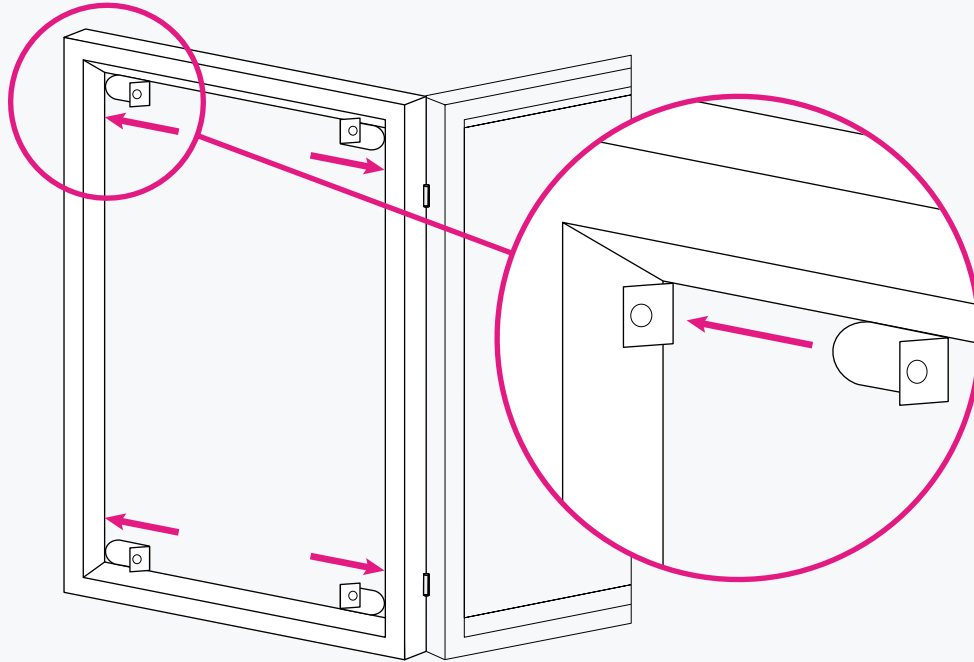
⚠️ **WARNING:** PLEASE READ THE INSTRUCTIONS BEFORE OPERATING THIS PRODUCT



THE INSTALLATION OF THIS PRODUCT SHOULD BE
CONDUCTED BY SOMEONE COMPETENT IN DIY.

STEP 1 - FITTING THE BRACKETS

Push the bracket in as far as possible. Do the same with the three other brackets in the other corners of the glass, as shown in the diagram. The lipped edge should be left exposed, ready for the blind to be mounted onto them. If you face some difficulty, prep the bracket holes with a knife and/or use lubricant such as washing up liquid to help slide the brackets underneath.



STEP 2 - APPLYING THE SIDE PROFILES

First ensure that the strips and brackets are in the correct position to mount the blind. You may need to slightly adjust the brackets in/out to ensure a snug fit & ensure the strips correctly line-up.

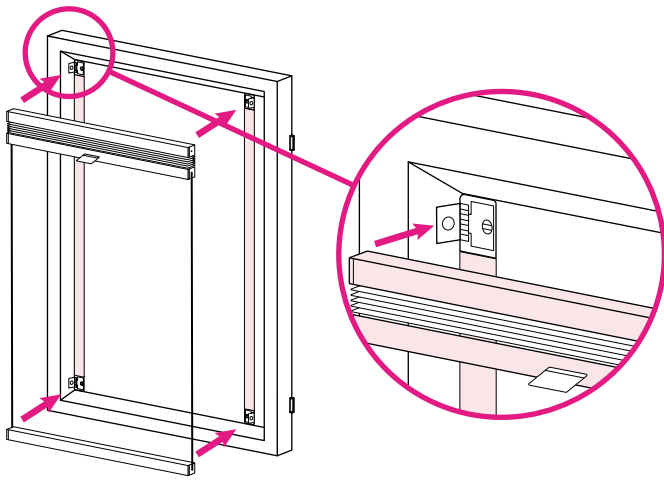
Second, remove the backing paper from the self-adhesive strips. Place the strip so that the cut outs go either side of the brackets, with the cut-out part closest to the window frame.

STEP 3 - INSTALLING THE BLINDS

Locate the slot on the back of the left and right side of the headrail and, starting from the top, gently push the headrail and then the bottom rail onto the exposed L-shaped bracket.

Ensure the raised circle on the exposed bracket locates into the hole on the plastic head and bottom rail end caps.

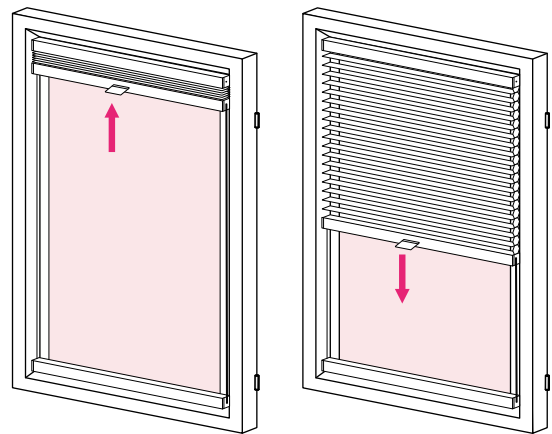
The cord tension can be adjusted using the small spring inside the bottom rail.



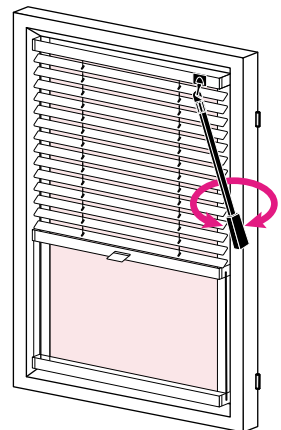
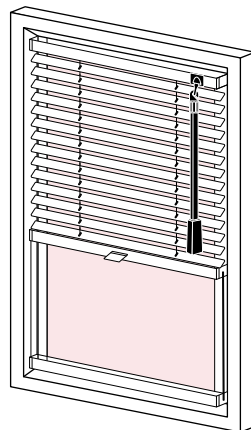
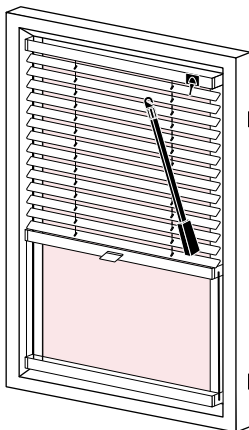
STEP 4 - OPERATING THE BLINDS

To raise and lower the blinds simply pull up and down using the handle.

The clever, fold away handle makes it ideal to use on bi-fold doors where it is important that the blind does not protrude further than the window frame.



FOR VENETIAN CLIP&FIT BLINDS ONLY

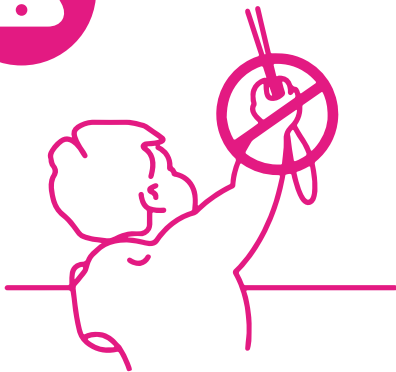


Attach the plastic wand by hooking the wand onto the tilt mechanism on the Venetian Blind.

Simply twist the wand to open and close the slats.

CHILD SAFETY

CHILDREN CAN STRANGLE IF A SAFETY DEVICE IS NOT INSTALLED. ALWAYS USE A SAFETY DEVICE TO KEEP CORDS AND CHAINS OUT OF REACH OF CHILDREN.



WARNING

Ensure that all provided safety mechanisms accompanying the blind are properly and securely installed to mitigate potential risks.

It is imperative to ensure that all cords remain inaccessible to children, those at risk, and pets. Due to their cords and chains, blinds can pose a potential strangulation hazard.

Relocate any adjacent beds, cots, and furniture that may be scaled, ensuring they are positioned at a safe distance from windows. Under no circumstances should cords be tied together. It's vital to prevent the cords from becoming entangled or forming loops.

For Venetian Blinds, a safety feature in the form of a breakaway wand is included.